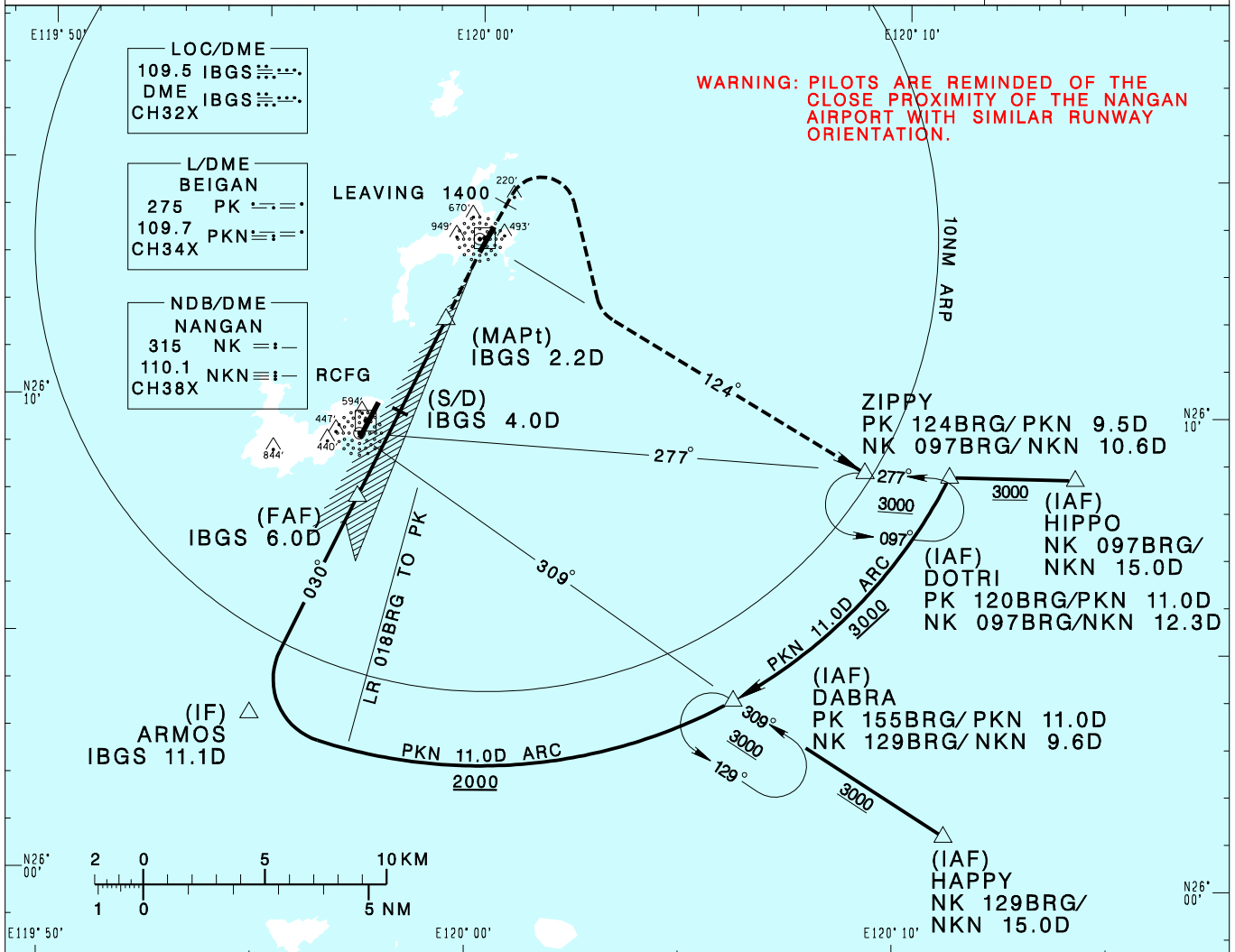


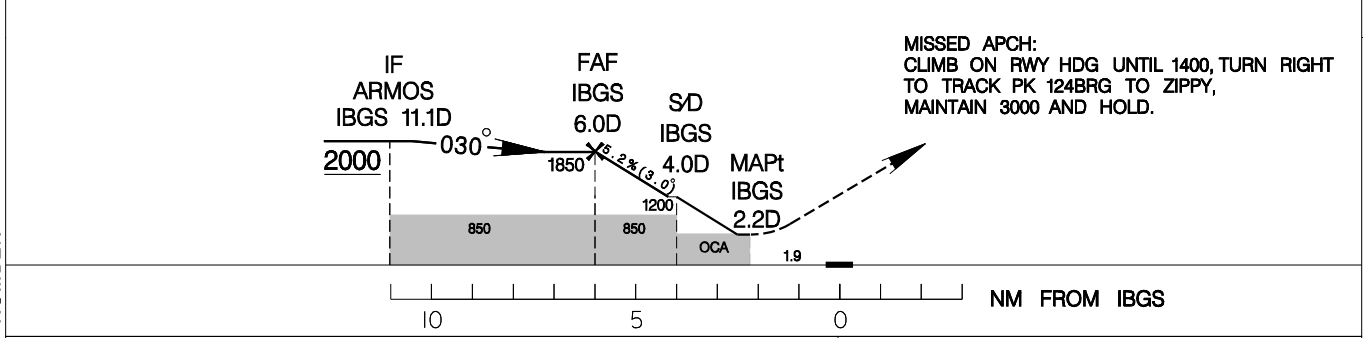
馬祖/北竿機場
MATSU/BEIGAN AD

RCMT
LDA RWY03

| | | | |
|--|----------------------|--------------------|--------------|
| TAIPEI APP 121.0 122.3 | BEIGAN TWR 118.65 | ATIS 127.35 | VAR 5° W |
| Apt Elev: 41' | Rwy03 THR Elev: 26' | Trans Level: FL130 | |
| BEARINGS ARE MAGNETIC; DISTANCES ARE NAUTICAL MILES; ELEVATIONS, HEIGHTS IN FEET | | | |



| | | | | | |
|------|------|------|------|--------|--------------|
| 6DME | 5DME | 4DME | 3DME | 2.6DME | DIST to IBGS |
| 1850 | 1540 | 1230 | 910 | 780 | ADVISORY ALT |



| | | |
|---|---------------------------|---|
| MINIMA (OCA IN FT, VIS IN M, OCH IN FT) | | NOTE 1. CAUTION HIGH TERRAIN NEAR THE AIRPORT. 2. CIRCLING NA NORTHWEST OF AIRPORT. 3. CIRCLING TO RWY 21 N/A AT NIGHT. 4. THE FINAL APCH COURSE OFFSETS FROM RWY CENTERLINE EXTENSION BY 2.7 DEG, AND INTERSECTS AT 1400M FROM THR OF RWY03. *DME REQUIRED. |
| CATEGORY | A B | |
| STRAIGHT-IN MA C/G 4.7%(286ft/NM) | 780/2000 754 780/2400 754 | |
| CIRCLING | 1300/3600 1259 | |

CHANGES: NEW PAGE NUMBER